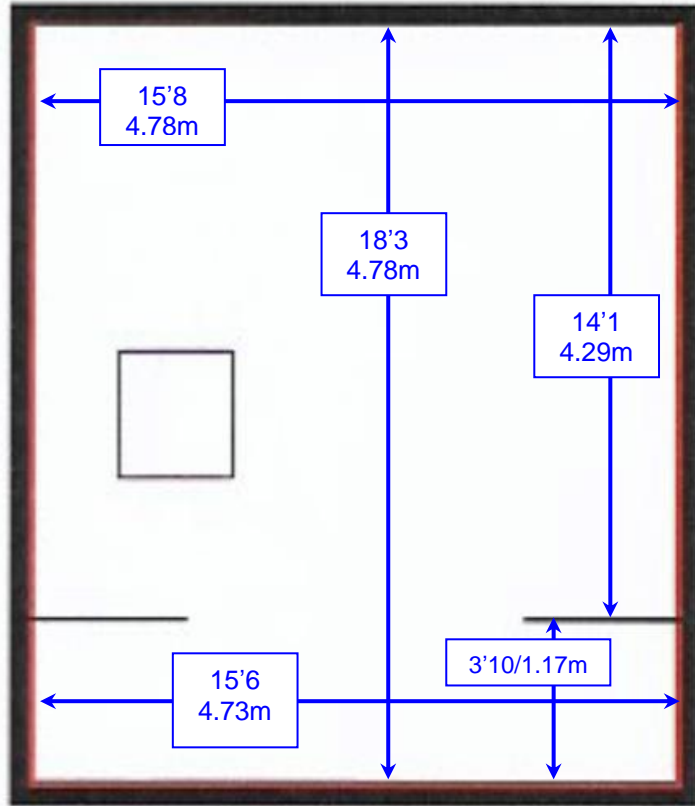


Guidance Plan – 45 Turnham Green Terrace – Not to scale

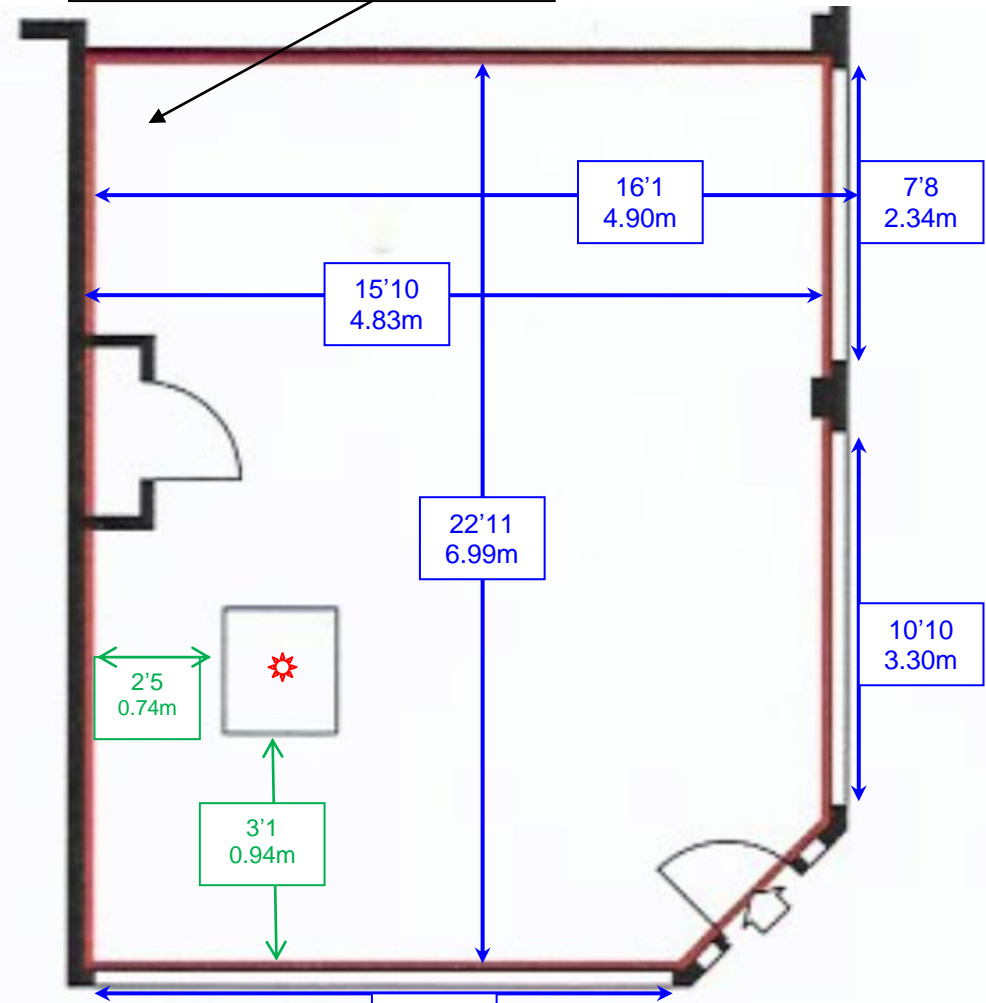
Basement store: 220 sq. ft. / 20 m²
Pavement vaults: 60 sq. ft. / 6 m²



Basement

Ceiling heights:
 Timber joist 7'0" / 2.13m
 In vault 7'4" / 2.24m

Ground floor: 360 sq. ft. / 33 m²
 With allowance made for WC



Ground Floor

Ceiling heights:
 Max. 11'11" / 3.63m
 To suspended ceiling 8'10" / 2.69m

Hatch access
 3'3" x 3'3"
 0.99m x 0.99m