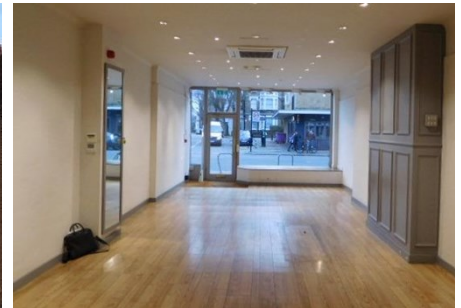


# TO LET

GROUND FLOOR RETAIL - CENTRAL CHISWICK

**MJFINN**  
COMMERCIAL

**020-8995 5678**



## 288 CHISWICK HIGH ROAD, CHISWICK W4 1PA

**750 sq.ft. (70 sq.m.)**

**Location:** Prominently situated on the prime north side of Chiswick High Road (A315) in this busy parade between Clifton Gardens (west) and Fishers Lane (east), directly opposite Zizzi and the Market Place where the monthly Chiswick Flower Market. Many multiples represented close by including 3 Store, Octavia Foundation, Gail's Bakery, Nationwide, Lloyds TSB and Campbell's Chemist. Turnham Green (district line) TfL station is about 500m to the north east. The area is served by many bus routes. Convenient for 'Pay & Display/Pay by Phone' parking.

**Description:** Well presented ground floor retail unit with the advantage of rear pedestrian access and refuse store.

► Window frontage: 14'4    ► Overall built depth: 72'6

### FLOOR

Ground Floor	750	70
WC/Washroom	-	-
<b>TOTAL</b>	<b>750 sq. ft.</b>	<b>70 sq. m.</b>

[www.mjfinncommercial.co.uk](http://www.mjfinncommercial.co.uk)

[info@mjfinncommercial.co.uk](mailto:info@mjfinncommercial.co.uk) | 11 Devonshire Mews, Chiswick, London W4 2HA

The Agents for themselves and for the Vendors/Lessors give notice that these particulars do not constitute, nor constitute any part of an offer of contract. All statements contained in these particulars are made without responsibility on the part of the Agents or the Vendor/Lessor. None of the statements contained in these particulars is to be relied upon as statements or representation of facts. Any intending Purchaser/Lessee must satisfy themselves by inspection or otherwise as to the correctness of each of the statements contained in these particulars. The Vendor/Lessor does not make or give and neither the Agents or any person in their employ has any authority to make or give any representation or warranty whatever in relation to this property. V.A.T. may be payable on the purchase price and/or rent, all figures quoted are exclusive of V.A.T.

# 288 CHISWICK HIGH ROAD, CHISWICK W4 1PA

## Features:

- Well presented ground floor shop
- Prime north side of Chiswick High Road
- Close to many multiples
- Rear access from Dolman Road
- Air-conditioning (not tested)
- Overall built depth: 72'6
- Directly opposite Zizzi
- Ideal for fashion
- To Let - New Lease
- Sole Agent



## Terms:

NEW full repairing & insuring lease for a minimum term of 10 years, subject to upward only rent reviews every 5th year..

## Rent:

£62,500 p.a.x.

## Premium:

Nil.

## Rates:

Please contact the London Borough of Hounslow on 020 8583 5708.

Rateable Value: £72,000

## EPC:

()

## VAT:

VAT is not applicable.

## Legal Costs:

The tenant to contribute £2,000 plus VAT towards the landlord's legal costs.

## Possession:

Possession can be granted from mid April 2021.

## Viewing:

Strictly by appointment only.

**Important note:** all viewing attendees must be wearing a face mask to enter the property.

## Contact:

Dee Hurley  
020 8995 5678  
info@mjfinncommercial.co.uk



Subject to Contract: Jan-21

**CONTACT US**  
020 8995 5678

info@mjfinncommercial.co.uk  
www.mjfinncommercial.co.uk

11 Devonshire Mews  
Chiswick, London W4 2HA

**MJFINN**  
COMMERCIAL